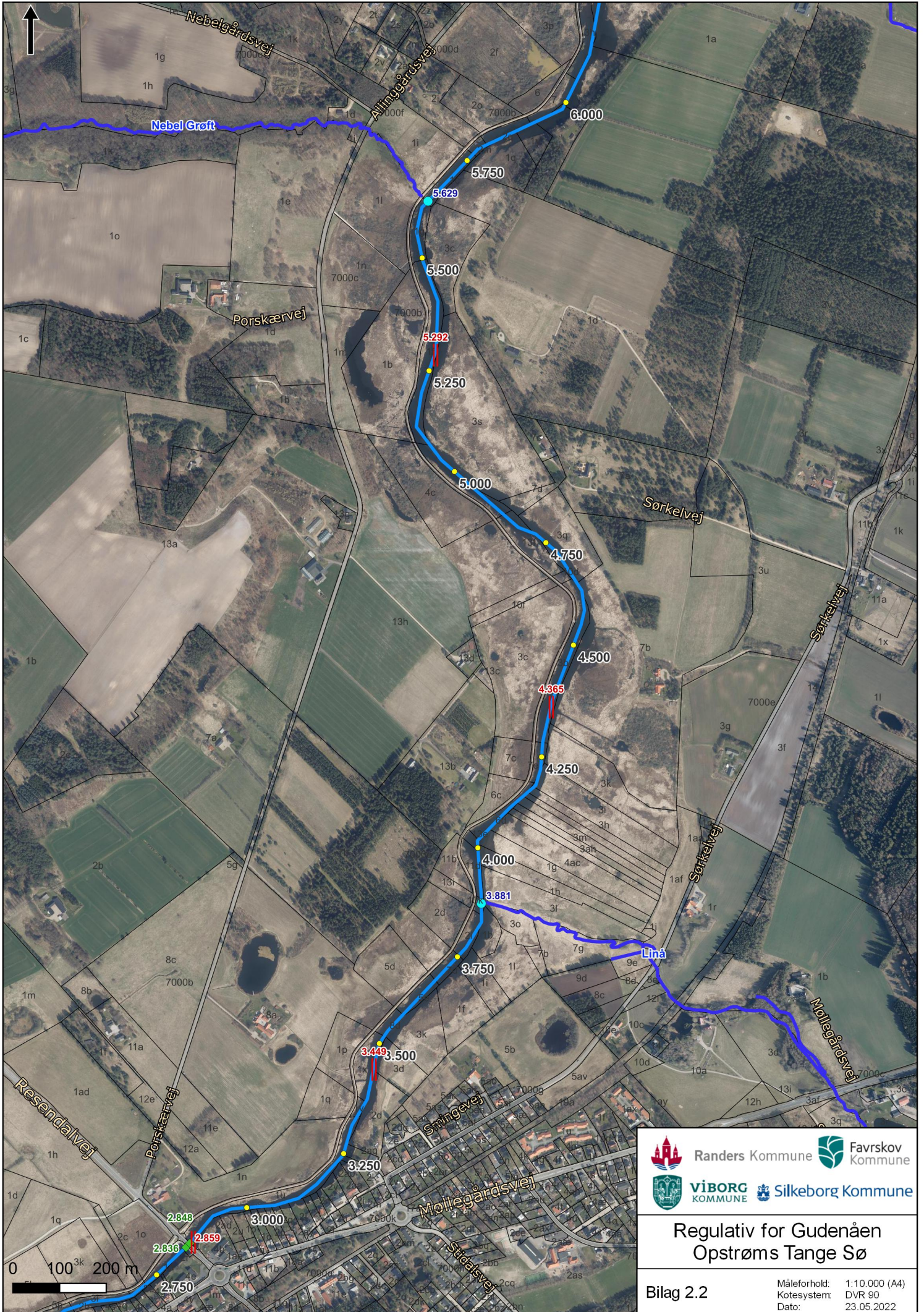




Regulativ for Gudenåen
Opstrøms Tange Sø

Bilag 2.1

Måleforhold: 1:10.000 (A4)
Kotesystem: DVR 90
Dato: 23.05.2022

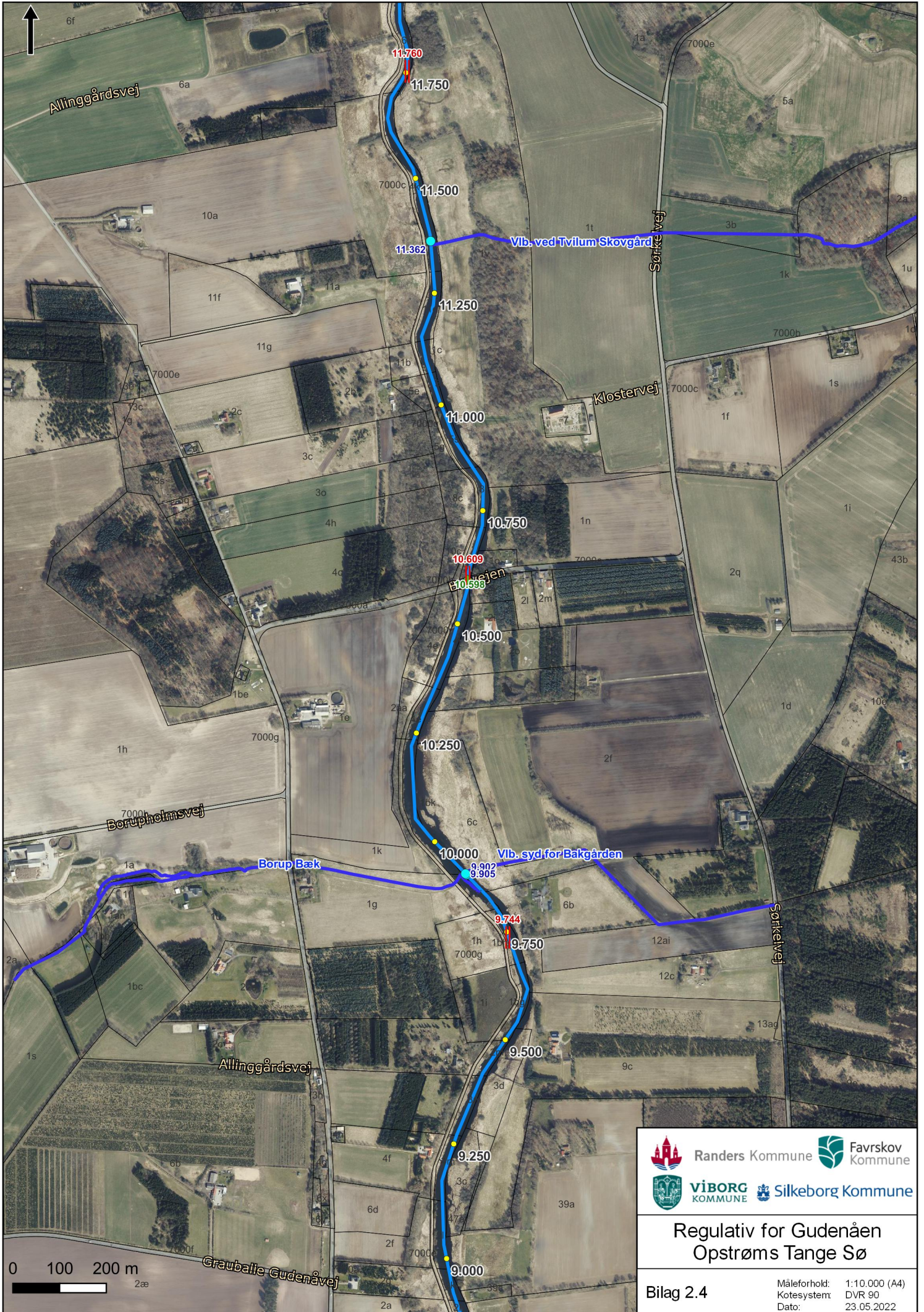


Regulativ for Gudenåen
Opstrøms Tange Sø

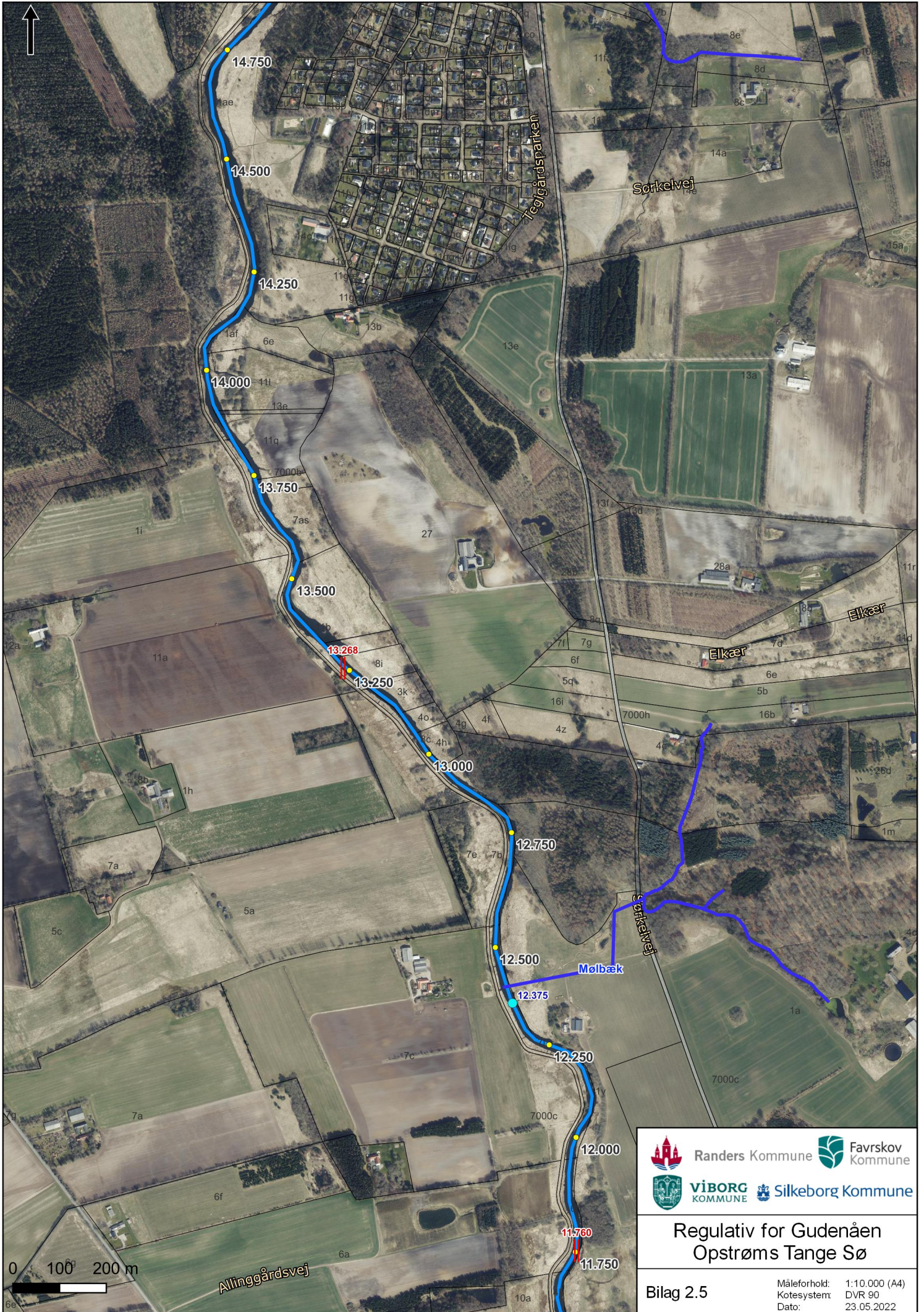


Regulativ for Gudenåen
Opstrøms Tange Sø

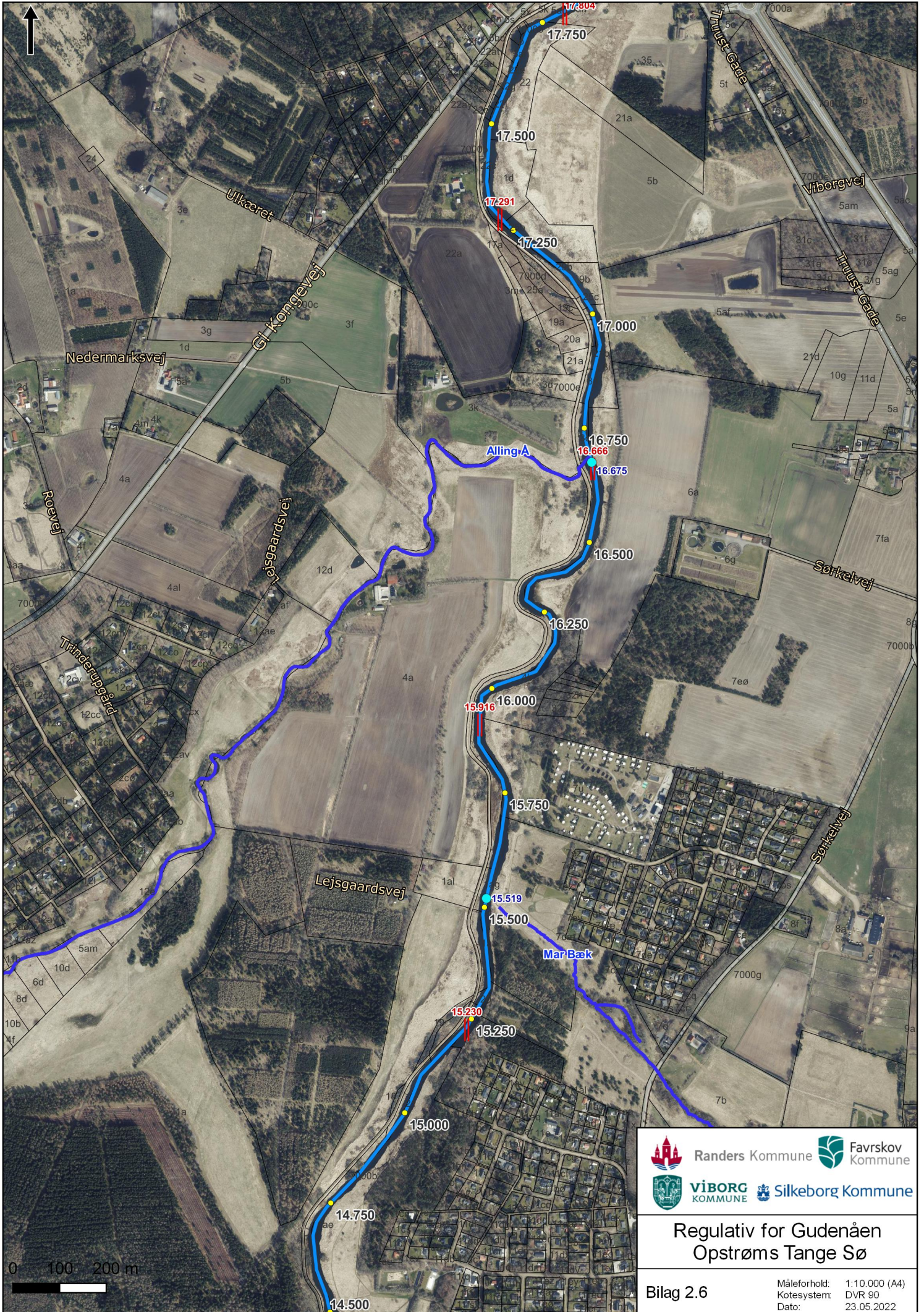
Bilag 2.3
 Måleforhold: 1:10.000 (A4)
 Kotesystem: DVR 90
 Date: 23.05.2022



Regulativ for Gudenåen
Opstrøms Tange Sø



Regulativ for Gudenåen
Opstrøms Tange Sø



Regulativ for Gudenåen
Opstrøms Tange Sø

Bilag 2.6
 Måleforhold: 1:10.000 (A4)
 Kotesystem: DVR 90
 Date: 23.05.2022



Regulativ for Gudenåen
Opstrøms Tange Sø

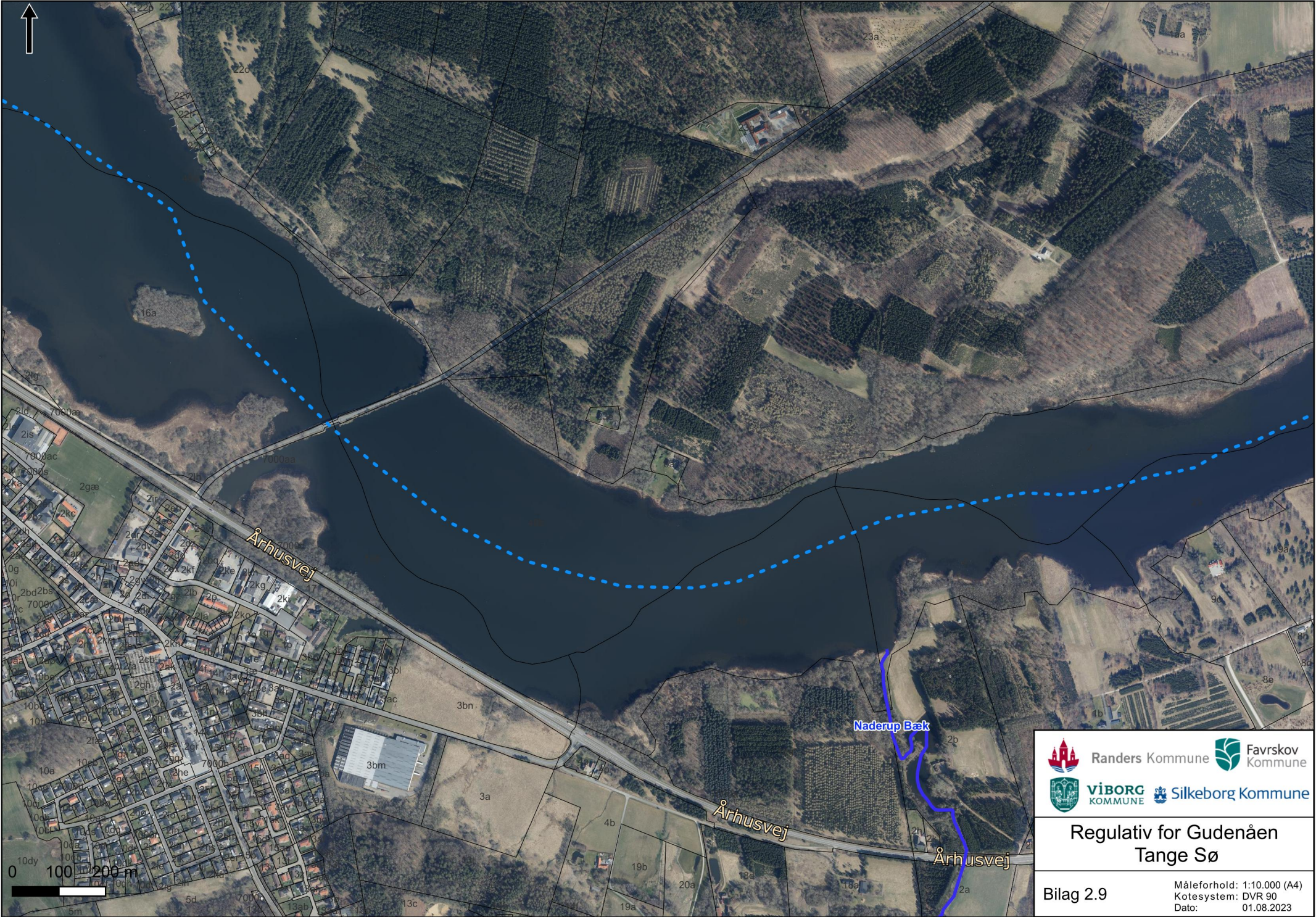


 Randers Kommune
  Favrskov Kommune
 VIBORG KOMMUNE
  Silkeborg Kommune

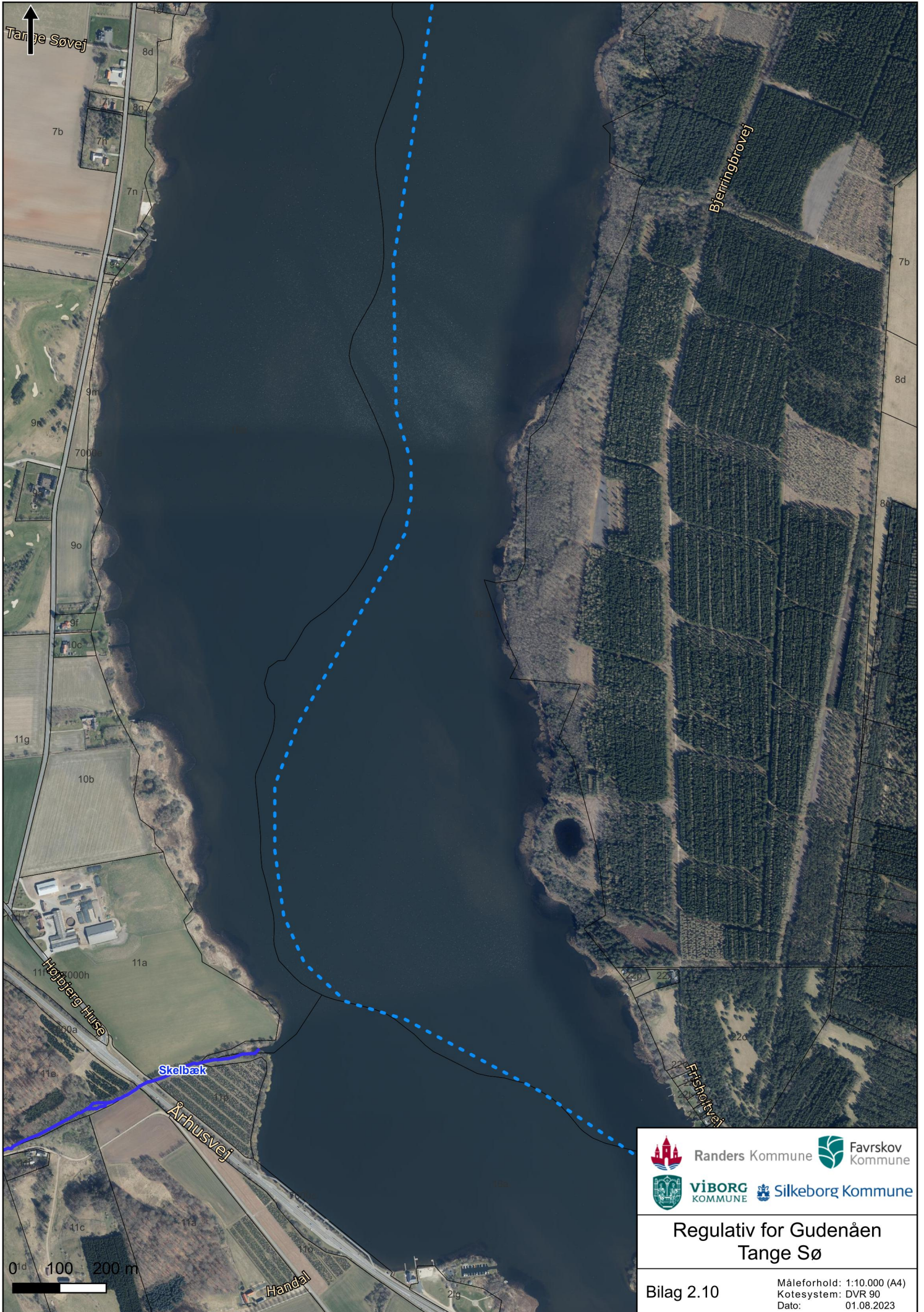
Regulativ for Gudenåen Tange Sø

Bilag 2.8

 Måleforhold: 1:10.000 (A4)
 Kotesystem: DVR 90
 Dato: 01.08.2023

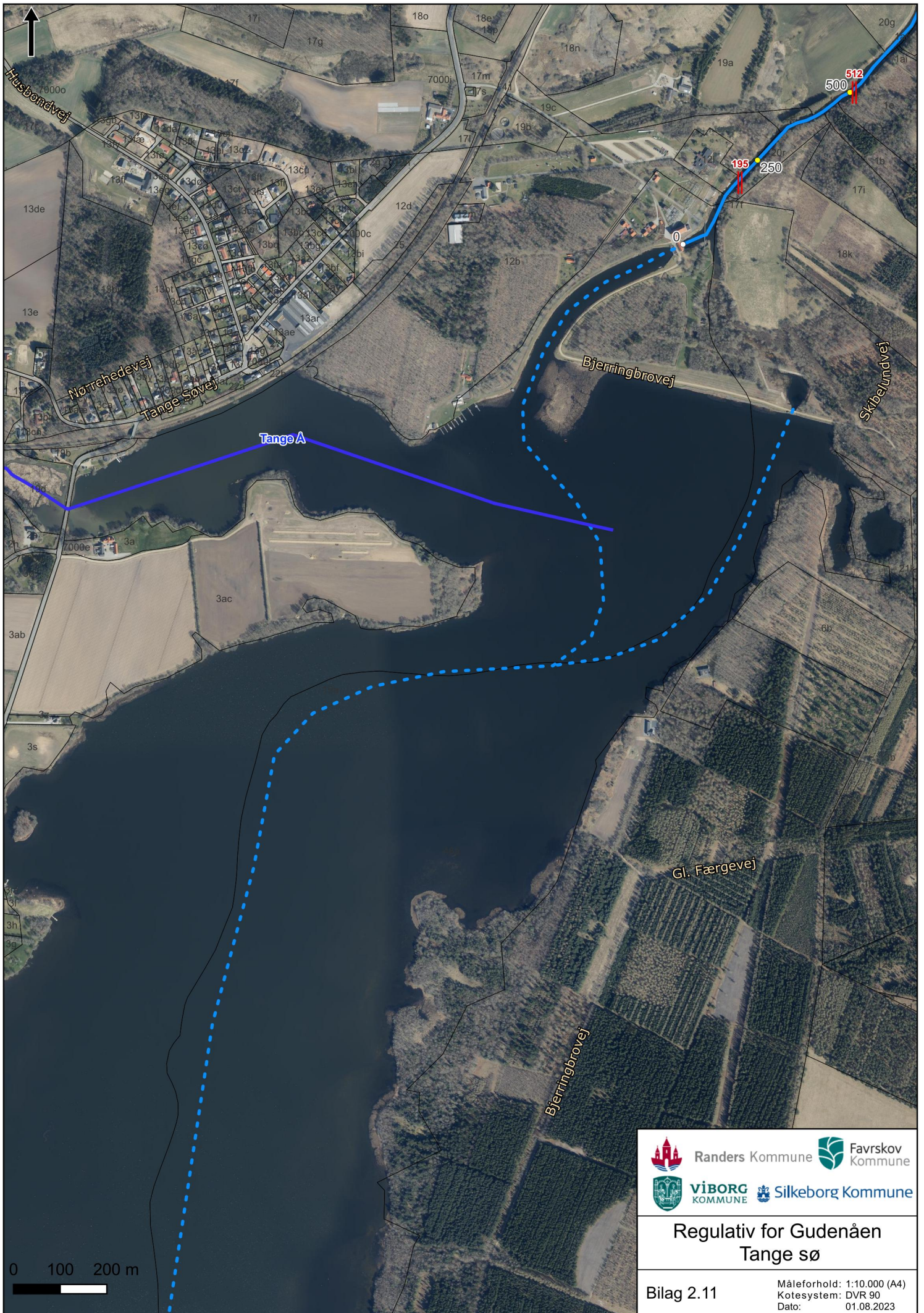


Regulativ for Gudenåen Tange Sø



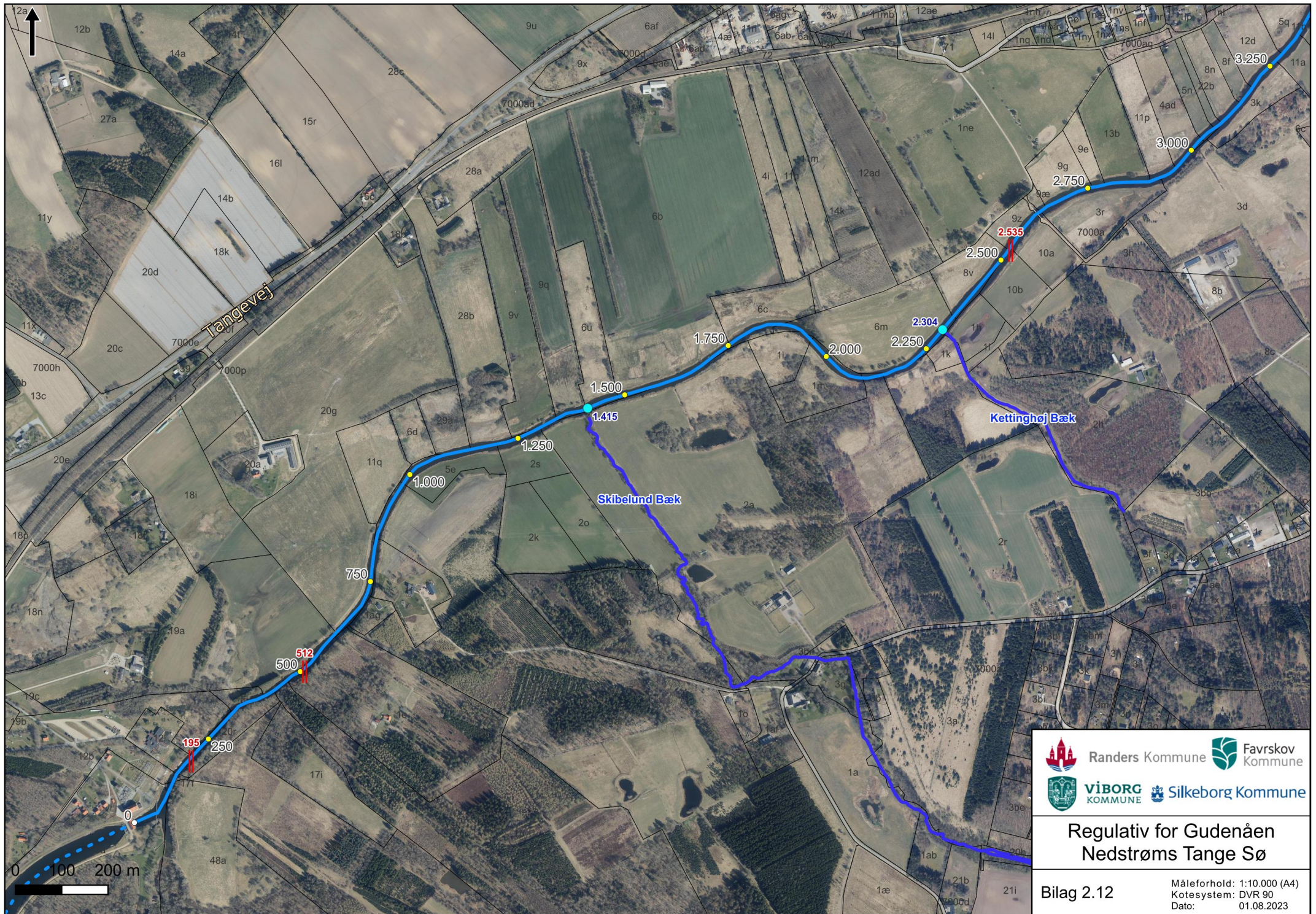
**Regulativ for Gudenåen
Tange Sø**

Bilag 2.10 Måleforhold: 1:10.000 (A4)
Kotesystem: DVR 90
Dato: 01.08.2023

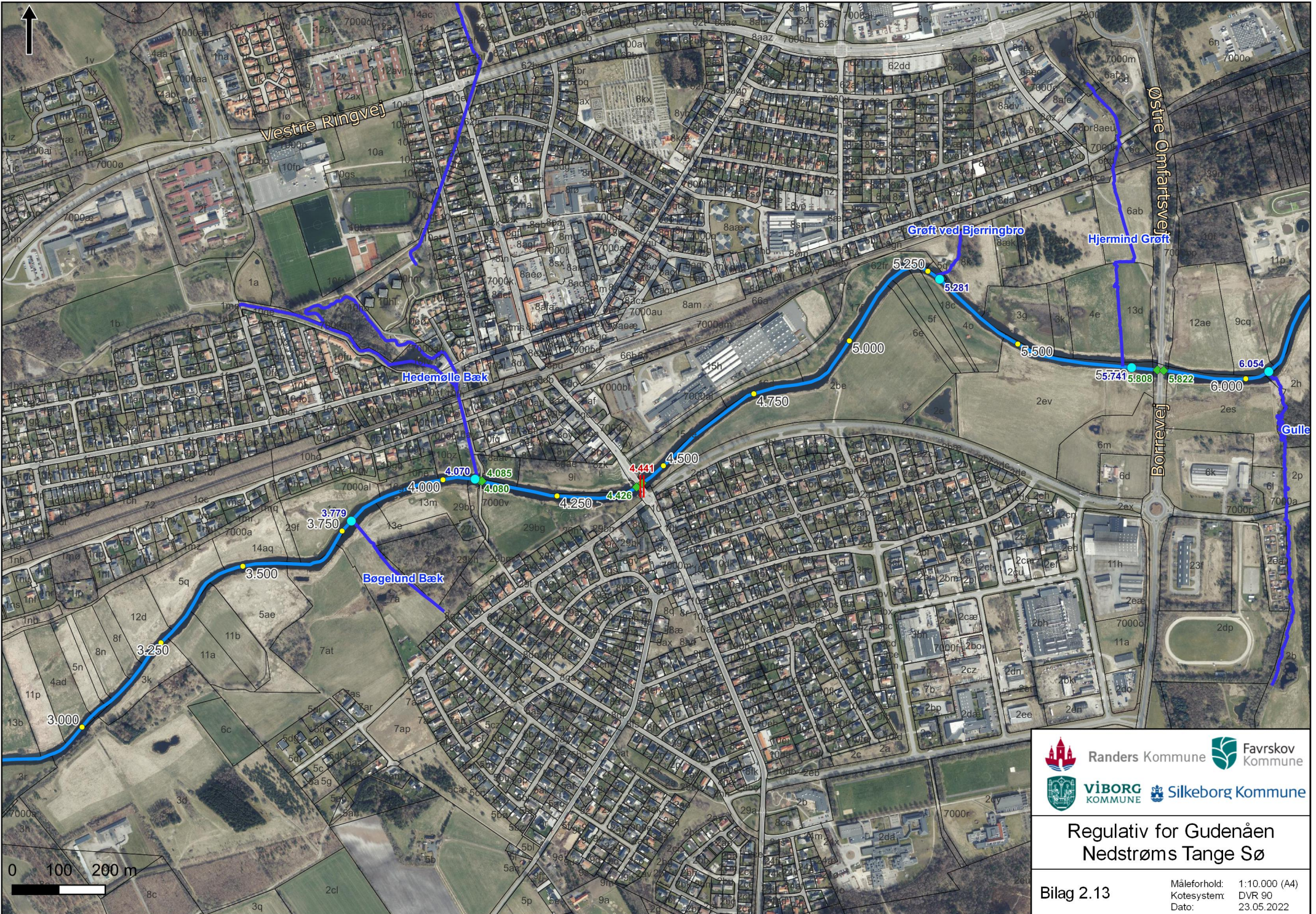


**Regulativ for Gudenåen
Tange sø**

Bilag 2.11 Måleforhold: 1:10.000 (A4)
Kotesystem: DVR 90
Dato: 01.08.2023

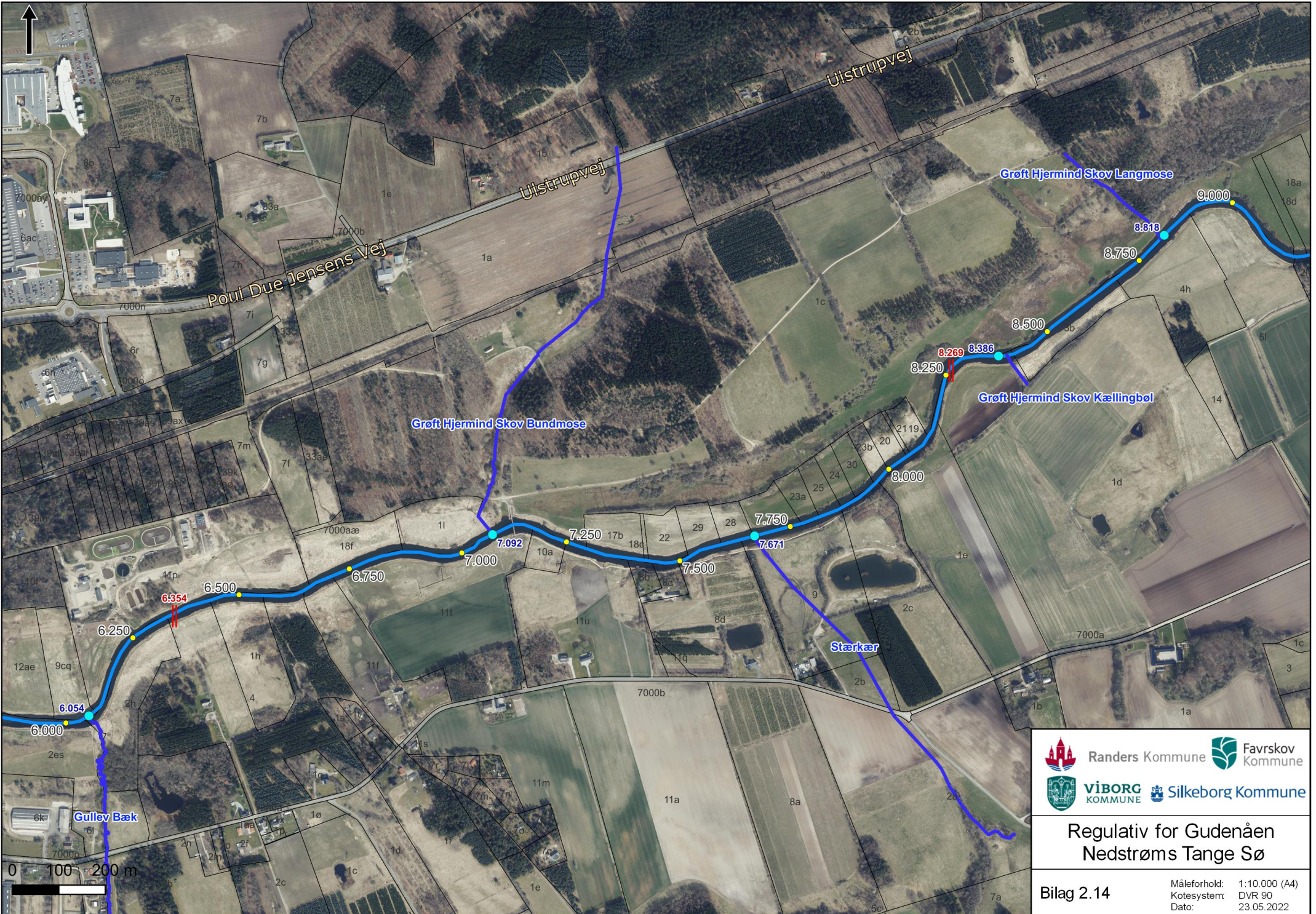


**Regulativ for Gudenåen
Nedstrøms Tange Sø**



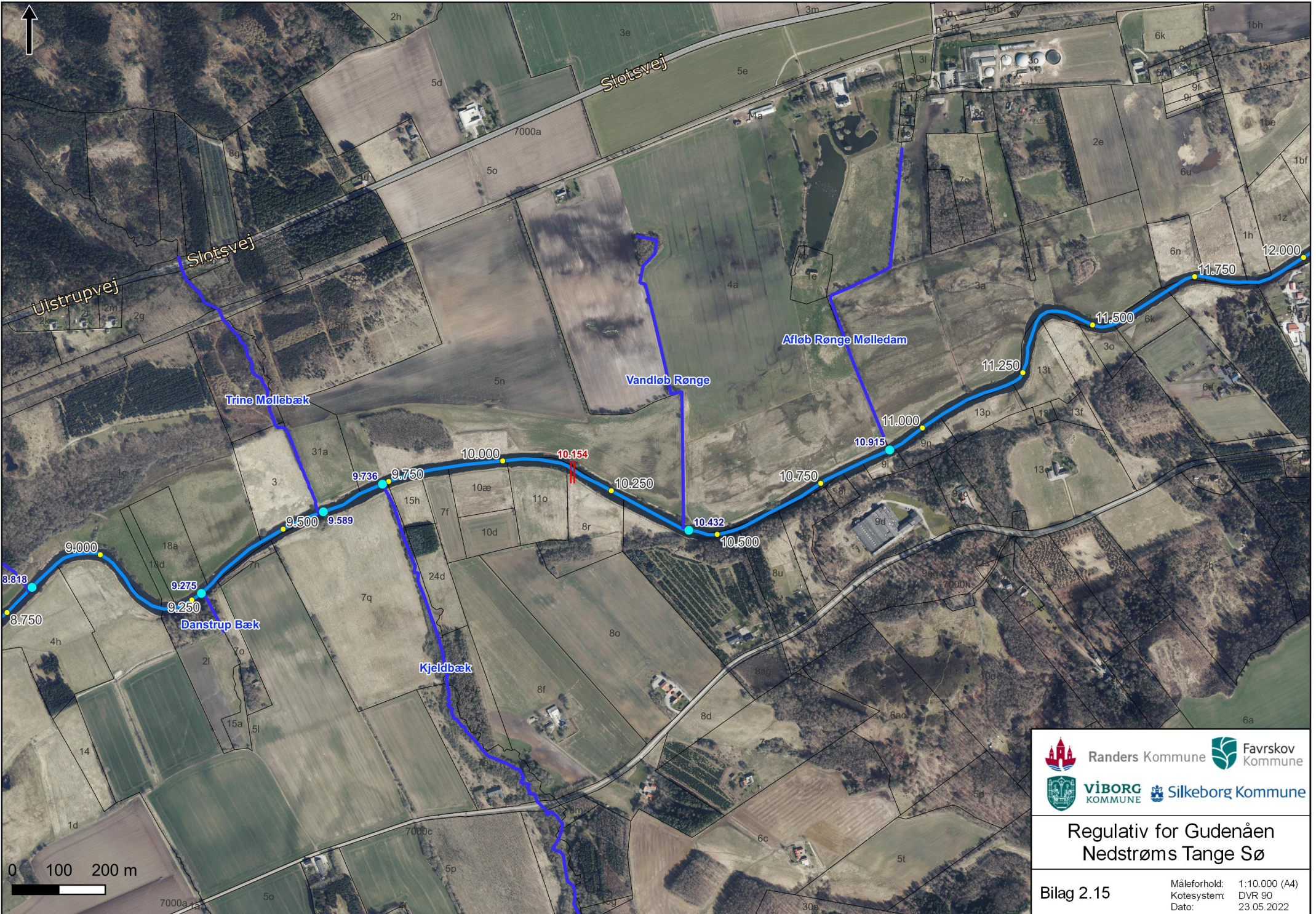
**Regulativ for Gudenåen
Nedstrøms Tange Sø**

Bilag 2.13 Måleforhold: 1:10.000 (A4)
 Kotesystem: DVR 90
 Dato: 23.05.2022



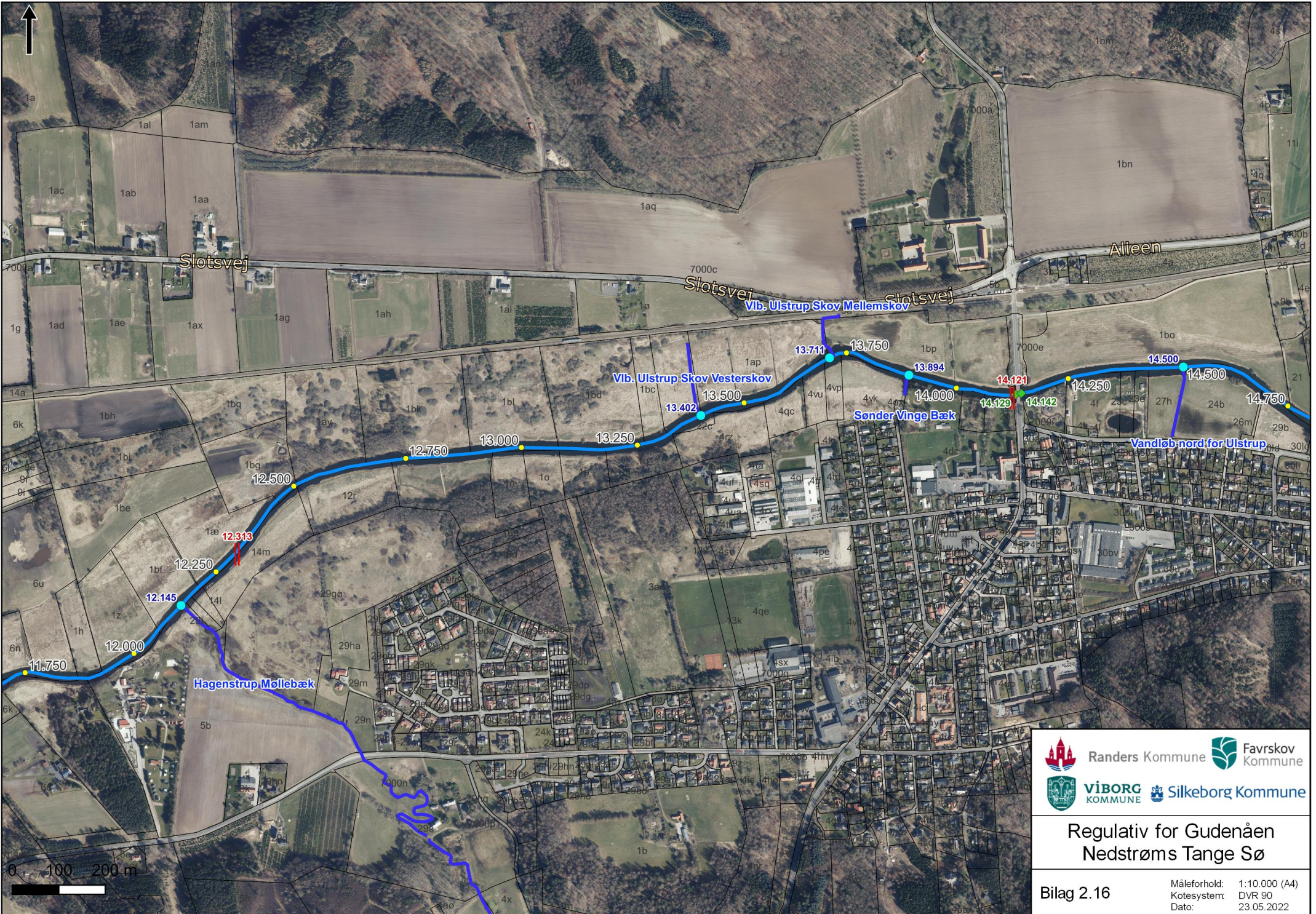
Regulativ for Gudenåen
Nedstrøms Tange Sø

Bilag 2.14
 Måleforhold: 1:10.000 (A4)
 Kotesystem: DVR 90
 Dato: 23.05.2022



**Regulativ for Gudenåen
Nedstrøms Tange Sø**

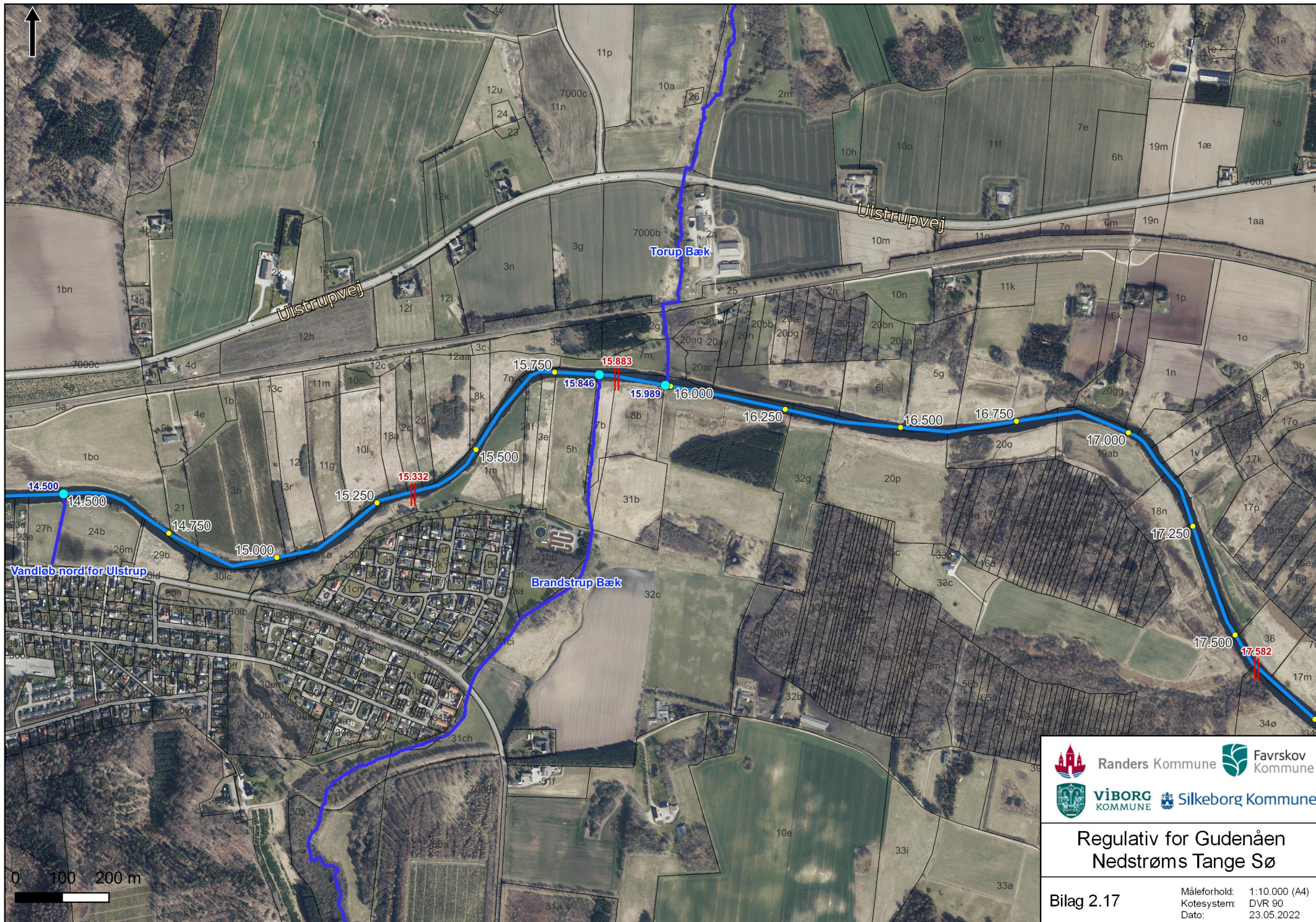
Bilag 2.15 Måleforhold: 1:10.000 (A4)
 Kotesystem: DVR 90
 Dato: 23.05.2022



Regulativ for Gudenåen
Nedstrøms Tange Sø

Bilag 2.16

Måleforhold:	1:10.000 (A4)
Kotesystem:	DVR 90
Dato:	23.05.2022



Regulativ for Gudenåen Nedstrøms Tange Sø

Bilag 2.17

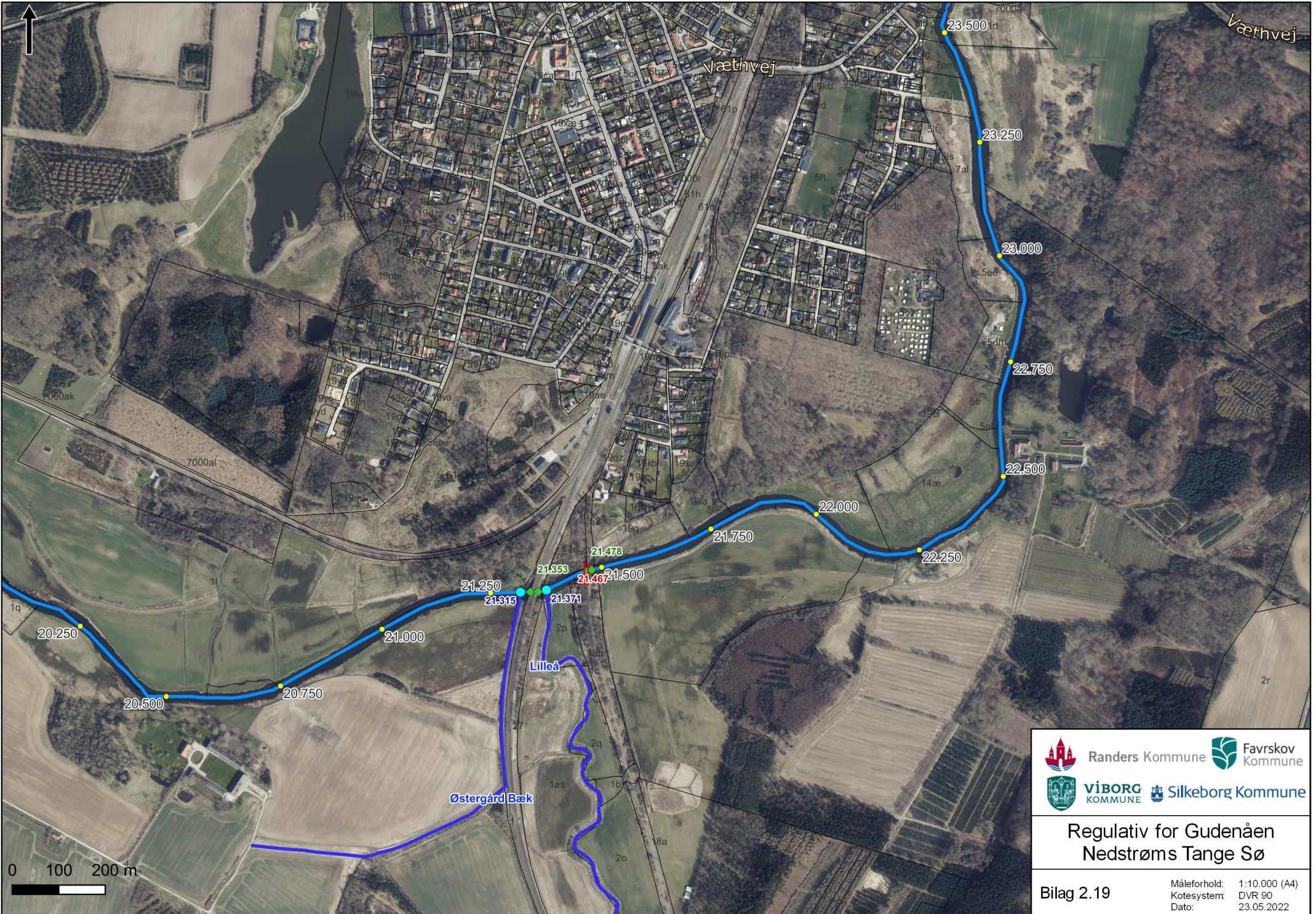
Måleforhold: 1:10.000 (A4)
Kotesystem: DVR 90
Dato: 23.05.2022



**Regulativ for Gudenåen
Nedstrøms Tange Sø**

Bilag 2.18

Måleforhold: 1:10.000 (A4)
Kotesystem: DVR 90
Dato: 23.05.2022

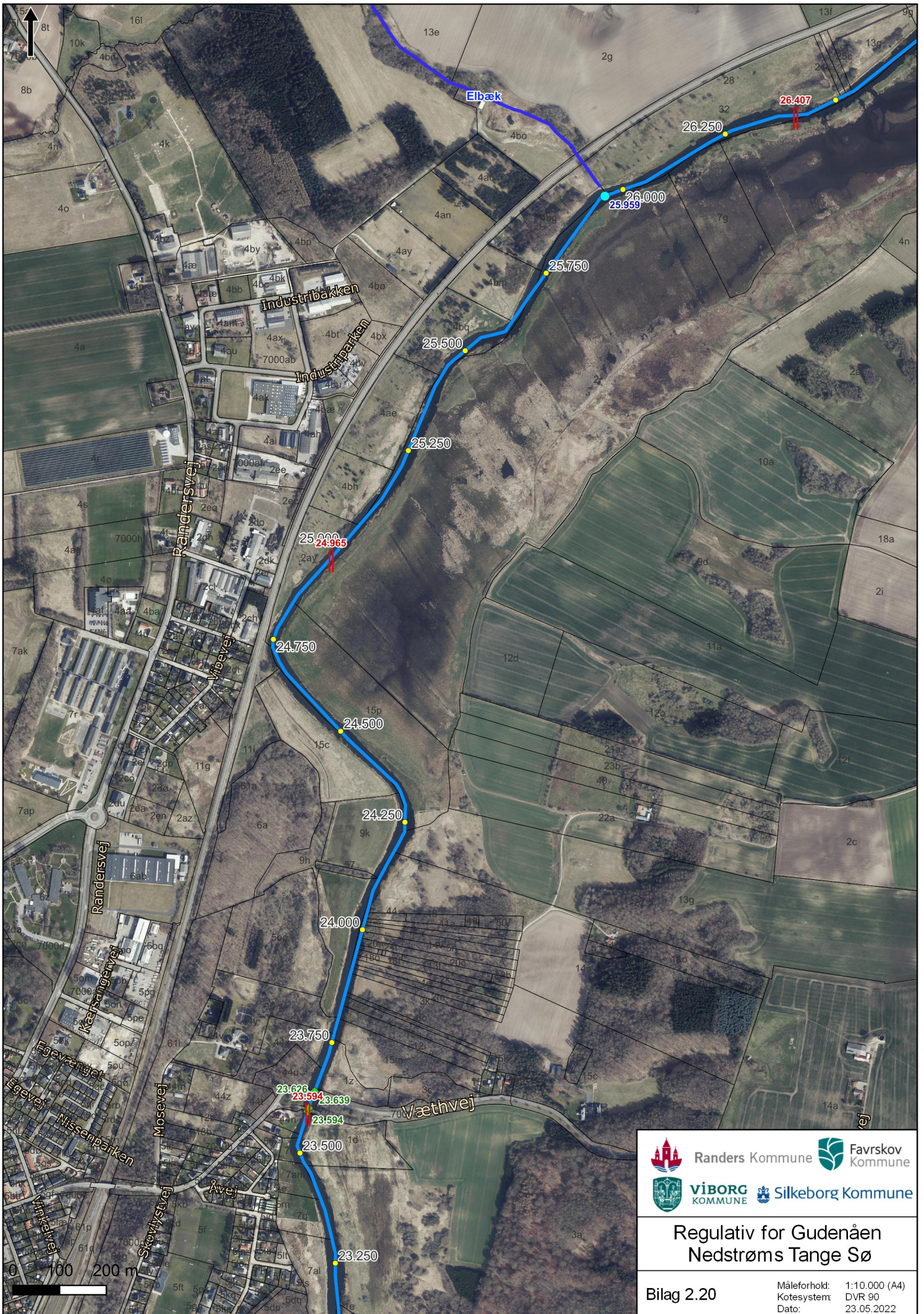


 Randers Kommune
  Favrskov Kommune
 VIBORG KOMMUNE
  Silkeborg Kommune

Regulativ for Gudenåen
Nedstrøms Tange Sø

Bilag 2.19

 Måleforhold: 1:10.000 (A4)
 Kotesystem: DVR 90
 Dato: 23.05.2022



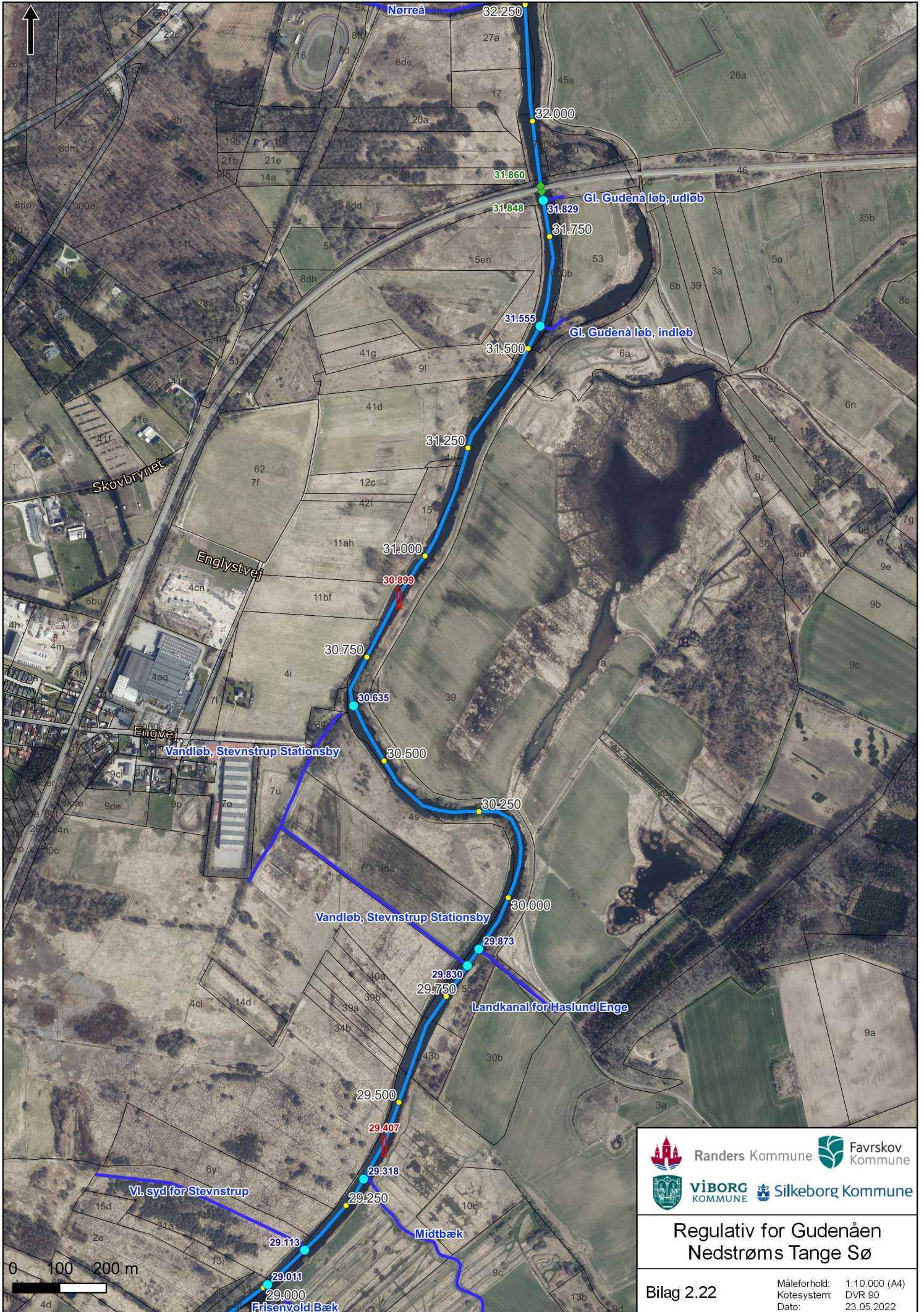
Regulativ for Gudenåen
Nedstrøms Tange Sø



**Regulativ for Gudenåen
Nedstrøms Tange Sø**

Bilag 2.21

Måleforhold: 1:10.000 (A4)
Kotesystem: DVR 90
Dato: 23.05.2022



Regulativ for Gudenåen Nedstrøms Tange Sø

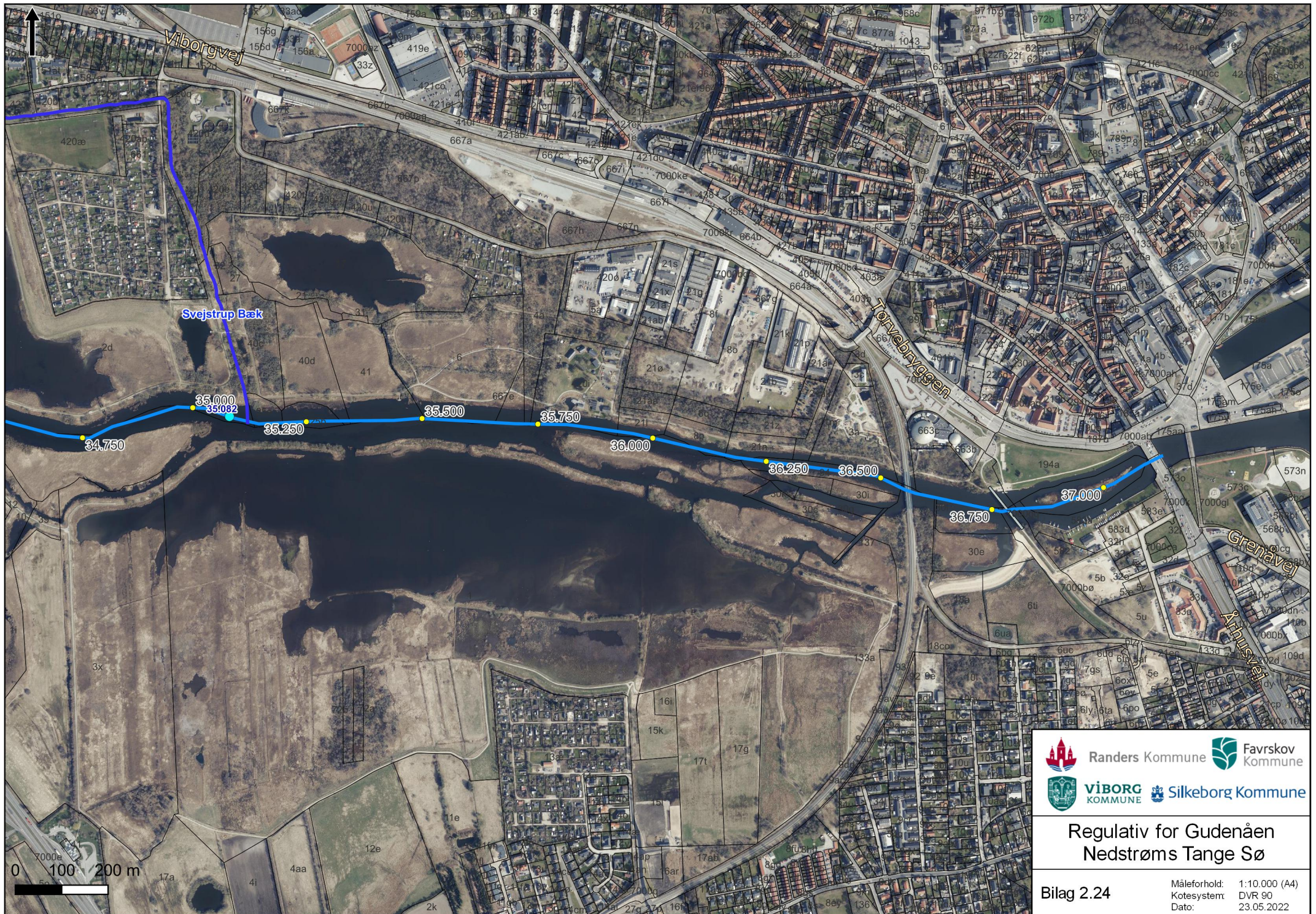
Bilag 2.22	Måleforhold: 1:10.000 (A4)
	Kotesystem: DVR 90
	Date: 23.05.2022



**Regulativ for Gudenåen
Nedstrøms Tange Sø**

Bilag 2.23

Måleforhold: 1:10.000 (A4)
Kotesystem: DVR 90
Dato: 23.05.2022



Regulativ for Gudenåen
Nedstrøms Tange Sø